

Longevity Strategies for Labrador Retrievers in 2026 — And Beyond

As we enter 2026, we're excited to continue expanding and refining the science-based strategies that help your Labrador Retriever live longer, healthier, and more vibrant years. At HelpingPetsLiveLonger.com, our mission is rooted in precision longevity medicine — proactive, personalized care that identifies disease before symptoms appear, reduces chronic inflammation, and maximizes healthspan, not just lifespan.



Three Transformative Pillars of Longevity Care

This year, our focus centers on three evidence-based pillars that can fundamentally transform your Labrador's health trajectory. These aren't incremental improvements — they're paradigm shifts in how we approach veterinary care.

Functional Medicine

Treating the whole dog by addressing biological drivers of disease before symptoms emerge

Advanced Early Detection

Finding disease signals months to years before clinical signs appear

Inflammation Reduction

Targeting ear health, allergies, and orthopedic issues at their source



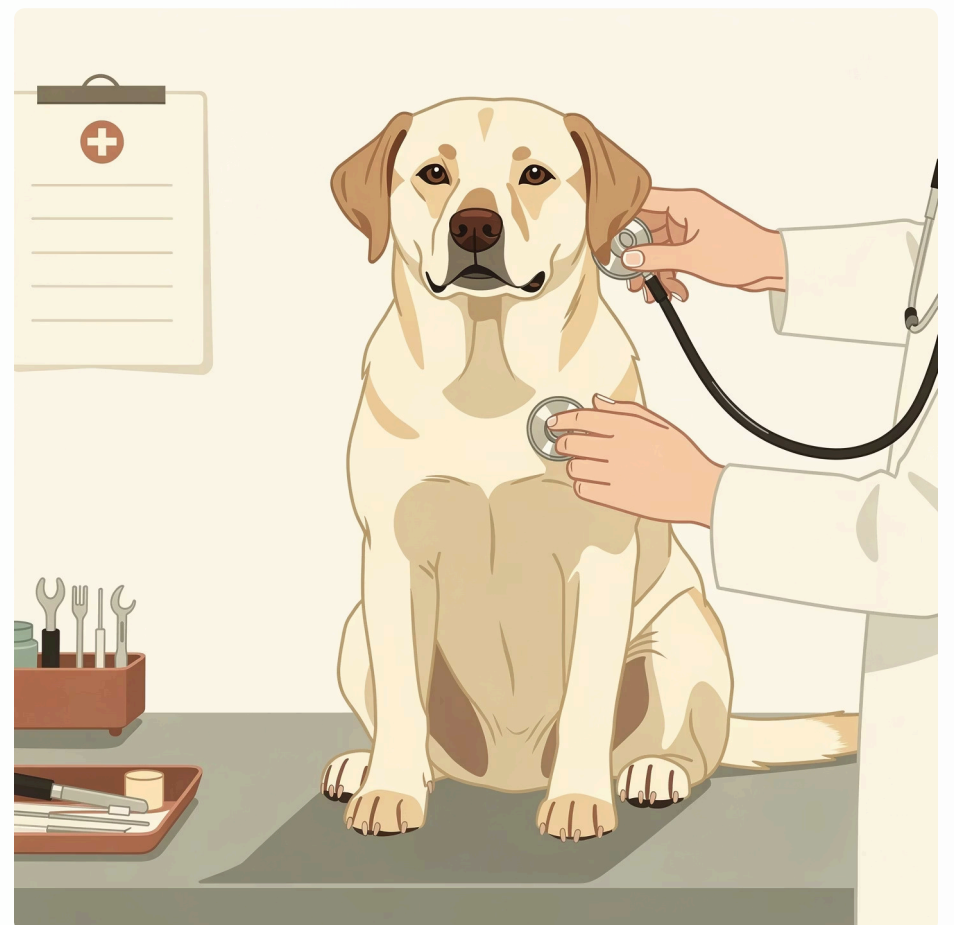
Functional Medicine — A New Standard in Veterinary Care

Most veterinary care remains reactive — treating diseases after symptoms appear. Longevity science, by contrast, is functional and preventive. This means we look deeper at the biological drivers of disease and intervene before irreversible damage occurs.

Why Functional Medicine Matters for Your Lab

- Labrador Retrievers have breed-specific risks including joint disease, cancer, and allergies
- Chronic, low-grade inflammation often underlies these conditions well before clinical signs show
- Functional medicine identifies those drivers early, creating a biologically tailored roadmap to preserve health

By integrating lifestyle, diet, functional labs, and genomic insights where applicable, we focus not on masking symptoms but shifting internal biology toward resilience and repair.



Early Detection — Catching Change When It Matters Most

Early detection is the cornerstone of longevity medicine. The goal is not to wait for pain, lethargy, or obvious clinical signs — but to diagnose sub-clinical disease early enough that we can make small changes to improve or sometimes eliminate disease down the road.

Chronic Inflammation Detection

Identify inflammatory markers long before symptoms develop, allowing intervention at the earliest stages

Cardiac Health Screening

Detect heart problems before murmurs or heart failure develops through advanced biomarkers

Organ Function Assessment

Catch liver and kidney disease earlier than routine blood tests, preserving organ reserve

Early Cancer Detection

Especially important for larger breeds like Labradors — catch cancer months to years before symptoms appear

- ❑ **Action Step:** If your Lab hasn't had a longevity-focused lab panel within the past 6–12 months, this is Step One of any serious longevity plan. By age 5, Labs need more than a basic CBC/chemistry panel.

Inflammation — The True Driver of Chronic Disease and Aging

Chronic inflammation — especially in ears, allergies, and joints — isn't just uncomfortable; it accelerates aging and disease progression. Longevity medicine prioritizes identifying these inflammatory drivers early and addressing them with targeted strategies.

01

Ears & Allergy Inflammation

Recurrent ear infections and environmental or food allergy flares are common sources of chronic inflammation. Rather than simply treating each flare, we work to identify the underlying sensitivities and systemic inflammatory burden to reduce recurrence and improve comfort.

02

Orthopedic Inflammation

Large breeds like Labrador Retrievers are predisposed to hip dysplasia and arthritis. Orthopedic inflammation leads to pain, reduced mobility, and a downward spiral into increased systemic inflammation. Joint health is addressed early — before irreversible cartilage loss — through low-impact conditioning, optimized weight management, and proactive nutritional support.

03

Systemic Inflammation

We target systemic inflammatory pathways with interventions that protect organ function, reduce cellular stress, and improve metabolic health. This includes therapeutic lifestyle changes and evidence-backed supplements that address inflammation at the cellular level.

A Better Diet... And Slightly Less of It



One of the most powerful – and underrated – longevity levers. Research shows that home-cooked diets may add up to 2.3 years to a dog's life, and caloric restriction extends lifespan in every mammal ever studied. Maintaining lean body weight is the single biggest predictor of longevity.



Less Inflammation

Quality nutrition reduces inflammatory burden throughout the body



Better Mobility

Lean body weight reduces joint stress and improves range of motion



Reduced Cancer Risk

Caloric restriction has powerful anti-cancer effects in all mammals



Healthier Microbiome

Fresh, whole foods support beneficial gut bacteria



Improved Vitality

Optimal nutrition translates to sustained energy and quality of life

Action Step: Feed the best diet you can reasonably manage – home-cooked, fresh, or freeze-dried – and feed just slightly less. Lean pets live longer. Every time.

Smarter Vaccines and Parasite Prevention

Use only what your pet needs — no more, no less

Vaccines and pest preventatives protect against deadly disease, but overuse can create unnecessary immune burden, especially in older pets. For longevity-focused care, we employ risk-based medicine to optimize protection while minimizing biological stress.

Longevity-Focused Approach

- Continue necessary vaccines and parasite control based on actual risk
- Use risk-based medicine tailored to your pet's lifestyle and environment
- Avoid unnecessary annual boosters, especially for low-risk pets
- Use titer testing where appropriate to confirm immunity
- Protect against the diseases that actually affect your lifestyle and region



- ☐ **Action Step:** Schedule a risk-based vaccine/parasite assessment. Smarter intervention equals better longevity outcomes.

Science-Based Supplements That Actually Work

Stop guessing. Start using the supplements that have evidence – and outcomes. After 40 years of clinical practice, I've learned which supplements truly extend healthspan and support aging Labrador Retrievers.



Longevity Plus

Comprehensive anti-inflammatory, antioxidant, and metabolic support formulation designed for aging dogs



Transcend

Improves mobility, reduces inflammation, and protects joints in ways traditional glucosamine cannot

Why Supplements Matter for Longevity

- Reduce chronic inflammation at the cellular level
- Support mitochondrial health and energy production
- Protect joints and muscles from age-related decline
- Improve organ function and metabolic efficiency
- Delay onset of age-related disease
- Support immune system balance

Action Step: Start with Longevity Plus and Transcend for pets 5+ years old – and build from there based on your pet's individual needs.

Prescription Longevity Drugs — Rapamycin & Acarbose

The future of veterinary medicine — available now

Rapamycin is one of the most promising longevity medications in all mammalian biology. Acarbose adds an additional layer of metabolic and anti-cancer protection. These drugs must be used correctly with proper dosing, monitoring, and individualized assessment.

What the Research Shows

14%

Lifespan Increase

Rapamycin increases lifespan by up to 14% in mammals with strong anti-cancer effects

5-7%

Acarbose Impact

Increases lifespan by 5-7% in male dogs with metabolic protection

Critical Requirements

- Proper dosing protocols
- Regular monitoring and bloodwork
- Individualized assessment of candidacy
- Understanding of contraindications



Action Step: If you're considering Rapamycin or Acarbose, do it with a veterinarian who specializes in longevity medicine. I can help you determine whether your pet is a candidate and develop a personalized protocol.

What to Do Next — Your Lab's Path to a Longer, Healthier Life

Longevity science is not about waiting for decline. It's about detecting change early, understanding why it occurs, and intervening with precision to preserve comfort and quality of life. Every year you invest in proactive longevity care today can translate into more healthy days tomorrow.



Just Curious About Your Lab's Lifespan?

Start with the **FREE DOG LONGEVITY QUIZ** to get a personalized longevity score plus first steps tailored to your pet



Ready to Start Protecting Your Lab's Future?

Book your **PET LONGEVITY CONSULT** with Dr. Kevin for clarity instead of guesswork and a science-based path forward



Ready to Give Your Lab the Priceless Gift of Better Health?

Learn about the **DOG LONGEVITY PROTOCOL** — the only concierge longevity program for pets in the U.S.

2026 is your Labrador Retriever's year for the **BEST HEALTH EVER**. Let's Go!

Warmly,
Dr. Kevin & The HPLL Team

DrKevin@TheLongevityVet.com | (805) 660-3759